

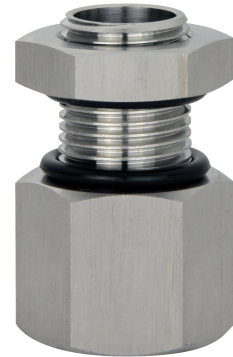
Kegco Heavy Duty 18/8" Stainless Steel Bulkhead

Bulkhead contains one piece solid bulkhead, plus two expandable high temperature o-rings and one stainless steel back nut.

INSTALLATION (no welding required)

Beverage Coolers

- A. Remove the plastic spigot
- B. Put the non-threaded part of bulkhead into cooler and attach one of the o-rings flush against inside of cooler.
- C. Put the second o-ring on the outside threaded part of bulkhead next to cooler and then attach the back nut. Hand tighten only until very tight and you can see o-ring is flattened or flush to the outside of cooler (do not use a wrench).
- D. It is strongly recommended that you use Teflon tape when attaching the stainless steel ball valve to the bulkhead.
- E. The inside of the bulkhead is threaded $\frac{1}{2}$ " female NPT to attach a 7" torpedo screen. This screen turns the cooler into a mash tun.



Stainless steel brew pots & kettles

- A. You must first drill a $\frac{7}{8}$ " hole. We find that 1- $\frac{1}{4}$ " to 1- $\frac{1}{2}$ " up from outside the bottom of pot is ideal for the center of the valve hole (drill 1- $\frac{1}{2}$ " up or higher for pots with a padded bottom)
- B. Follow the instructions listed above for the beverage cooler to install the stainless steel bulkhead as well as the stainless steel ball valve.
- C. The 12" torpedo screen is available to be attached to the interior threads of the bulkhead to turn the pot/kettle into a mash tun, and also can be used for straining whole hops from the boil.

Thermometer Installation

- A. By reversing the bulkhead and putting the non-threaded part outside the pot, this unique bulkhead can be used to house the 4" probe thermometer by installing a second hole higher on the pot/kettle.

